

# IATI Data on Display 2.0: Power (of) BI



## Moderator:

- Thea Schepers - Senior Advisor Open Data / IATI at the Ministry of Foreign Affairs of the Netherlands

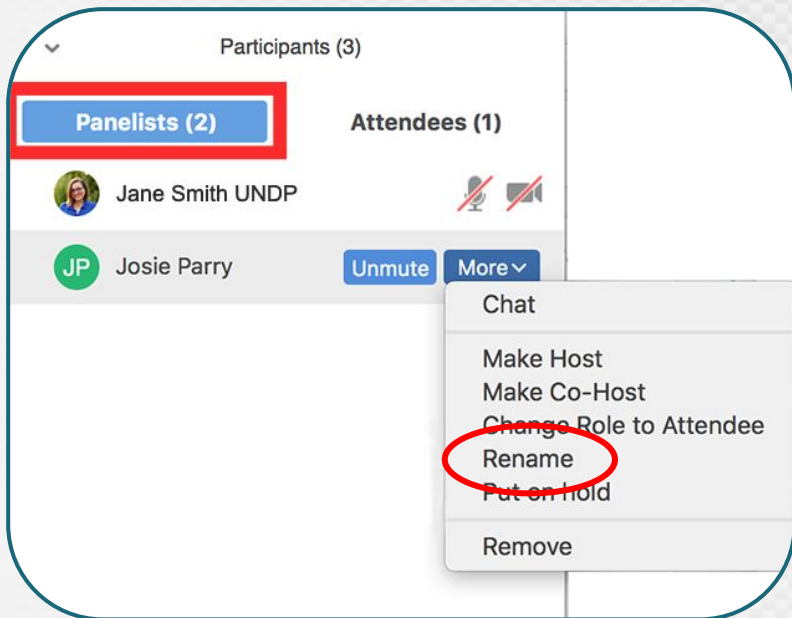
## Speakers:

- Elena Skovorodnikova - Data Analyst at Plan International Netherlands
- Rolf Kleef - CTO - Senior IATI Consultant at Data4Development
- Nancy Duckels - Senior Transparency Officer at Sightsavers



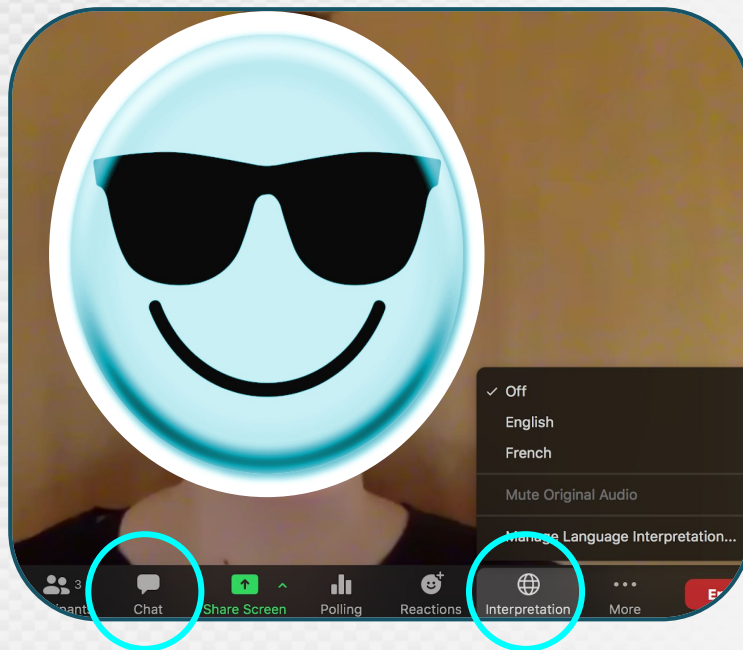
# Welcome!

*Please make sure your Zoom display name includes your full name and organisation*




*Ask questions via the chatbox*

*Live interpretation is available in (ENG), (FR), (ESP)*



# Introduction

## Purpose

- Recap **VCE 1** - consuming IATI-data  unique choices in showcasing data;
  - Showcased 3 different approaches: EU Aid Explorer / Project Browser (Canada) / MapAfrica (African Development Bank)
- **VCE 2** - deeper dive into **Power BI as visualization tool** for IATI data on display:
  - Showcasing different Power BI-dashboards;
  - Examining usability of Power BI - from experienced to (relative) newcomer perspective;

## Set-up and logistics

- 1 hour: both informative and interactive;
- Ways of interacting: drop your comments or questions via the **chat box**  & participate in **Zoom polls** 



# Agenda



1. **Introduction:** purpose and set-up of the meeting
2. **Case #1** - by **Sightsavers** - **Nancy Duckels**
  - *Relative Power BI-Newcomer* - incentives and challenges;
  - Q&A with audience;
3. **Case #2** - *What and who is involved* - by **Plan International Netherlands** - **Elena Skovorodnikova**;
  - *How we set up a dashboard I* - benefits of visualizing IATI in Power BI;
  - Tips and tricks of working with XML files and ensuring high-quality data;
  - Q&A with audience;
4. **Case #3** - *demo Dutch Relief Alliance* - by **Data4Development** - **Rolf Kleef**
  - *How we set up a dashboard II* - practical matters of aligning IATI data across organisations and programmes;
  - Showcasing Dutch Relief Alliance;
  - Q&A with audience;
5. **Final Interactive Part & Closing**







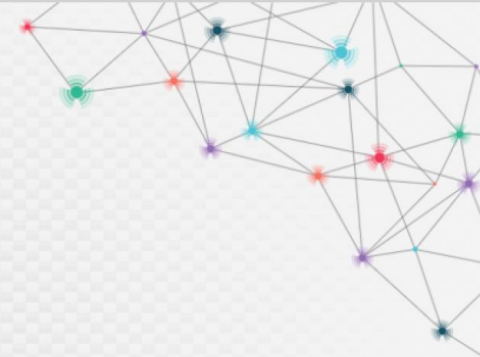
*Who is in the Room?*



The image features a central graphic with a yellow Sightsavers logo (two interlocking loops) and the word "Sightsavers" in black text. This is surrounded by a network diagram consisting of a central octagon with nodes at each vertex and midpoints, connected by a web of lines. Each node has a colored circular icon with concentric rings (red, blue, green, purple, or teal). The background includes large, faint concentric circles and network-like patterns in the corners.

**Sightsavers**

# Sightsavers



## Why is Sightsavers using PowerBI?

- An IATI dataset is a rich repository of information that is unique within Sightsavers and we want to make use of this fantastic resource!
- To bring IATI data out to the rest of the organisation
- To check and improve data quality
- To tell stories about the work that we do
- To demonstrate transparency efforts



# Sightsavers

## What are the challenges we face?

- **Getting up to speed with PowerBI**
- **Modelling the data**
- **Stakeholders understanding what they are looking at!**
- **Where to start? What story do we want to tell?**
- **Compatibility of partner data**









Girls first

# Plan International Netherlands

## How did we get started with IATI?

- Originally began reporting in IATI due to donor compliance requirements in late 2017.
- Since then, it has also been used to improve coordination with alliance partners and display projects for website visitors.

## Why Power BI?

- It is one of the biggest visualization tools on the market & is frequently updated.
- Training courses are widely available & there is a large online community.
- Full integration with other Microsoft products and licenses.
- Relatively low cost when done in-house.
- Reports can be made public easily.
- Visualizing IATI data is much easier than reading raw XML files.





Girls first

## FILTERS ↩

### Aid types

All ▾

### Themes

All ▾

### Donors & alliance leads

All ▾

### Locations

All ▾

### Alliances & programmes

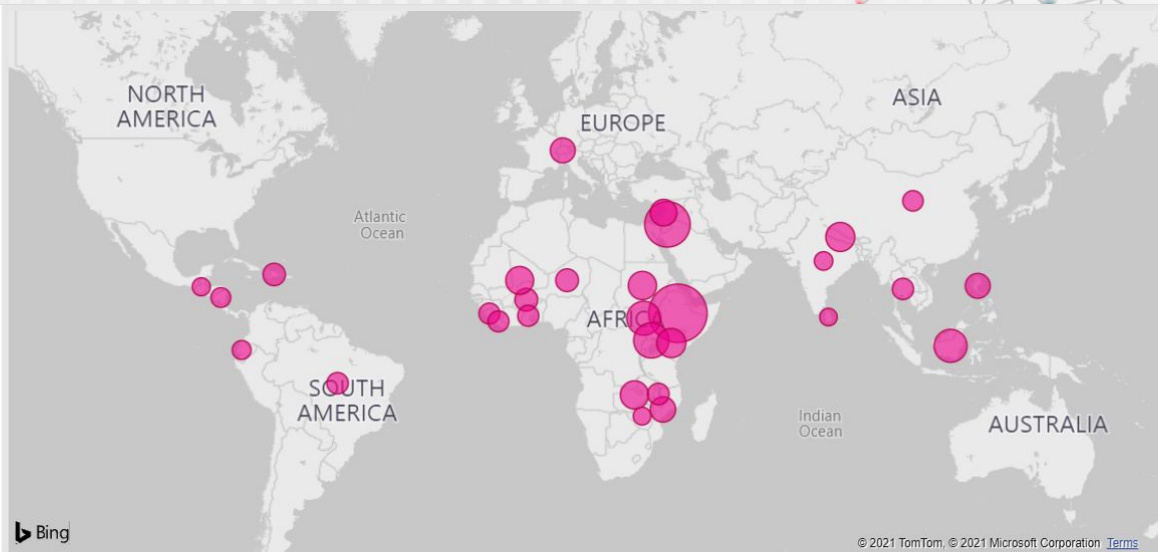
All ▾

### Project status

Current ▾

Selected **82** out of **212** projects published in the International Aid Transparency Initiative (IATI) database since 2018.

Last publication: **28-7-2021**.



### Selected projects (hover the mouse over a project or country to see details):

3-Country research study to end child, early and forced marriage in humanitarian settings

A Bloody Serious Matter Improved dignity and healthy menstruation for girls and women in Uganda

ARC Ethiopia

Be Alert: Prepare to Respond (programme)

Be Alert: Prepare to Respond (project)

Break Free! (Program)

Break Free! Burkina Faso

Break Free! Ethiopia



## FILTERS ↩

### Aid types

All ▼

### Themes

All ▼

### Donors & alliance leads

All ▼

### Locations

All ▼

### Alliances & programmes

All ▼

### Project status

Current ▼

Selected **82** out of **212** projects published in the International Aid Transparency Initiative (IATI) database since 2018.  
Last publication: **28-7-2021**.



### Selected projects (hover the mouse over a project or country to see details):

- 3-Country research study to end child, early and forced marriage in humanitarian settings
- A Bloody Serious Matter Improved dignity and healthy menstruation for girls and women in Uganda
- ARC Ethiopia
- Be Alert: Prepare to Respond (programme)
- Be Alert: Prepare to Respond (project)
- Break Free! (Program)
- Break Free! Burkina Faso
- Break Free! Ethiopia

## FILTERS

### Aid types

All

### Themes

All

### Donors & alliance leads

All

### Locations

All

### Alliances & programmes

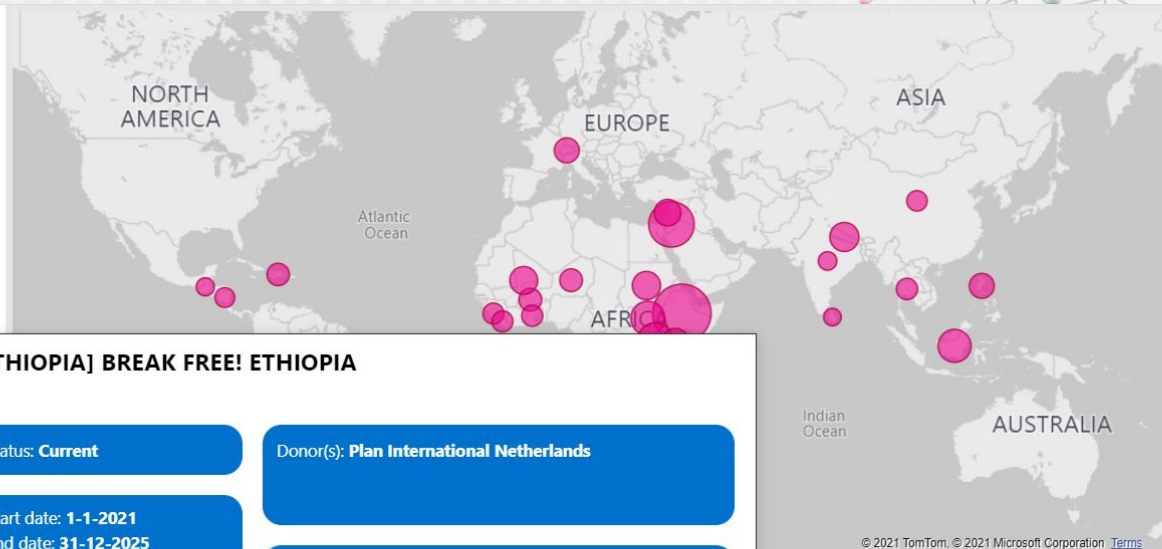
All

### Project status

Current

Selected **82** out of **212** projects published in the International Aid Transparency Initiative (IATI) database since 2018.

Last publication: **28-7-2021**.



### [ETHIOPIA] BREAK FREE! ETHIOPIA

Status: **Current**

Donor(s): **Plan International Netherlands**

Start date: **1-1-2021**  
End date: **31-12-2025**

Project budget:  
**€ 1,122,885**

Progress:  
**9%**

Theme(s): **Child Protection (incl. gender based violence); Children Adolescents & Youth as Active Agents of Change; Sexual & Reproductive Health and Rights; Skills Opportunities for Youth Employment &**

Summary: Millions of young people don't have access to appropriate, gender-responsive, quality SRHR education, information and services. This makes them vulnerable to unintended pregnancies, often followed by child marriage (CM). The Break Free! programme empowers adolescents and young people to make their own free and informed choices to speak out and have control over their SRH and lives. BF! is tackling root causes of gender inequality, unequal power relations and discriminatory social norms, systems, structures, policies and practices, supported by civil society and improved legislation. The project will be implemented between 2021 and 2025 by the Break Free! Consortium consisting of Plan International Netherlands, SAT and FAWA, technical partners KIT and RMT in collaboration with Netherlands' Embassies. It will be carried out in Ethiopia, Kenya, Sudan, Zambia, Malawi, Mozambique, Mali, Burkina Faso and Niger and a regional Pan-African component to sustain the country programmes.

# Plan International Netherlands

## Who is involved in the process?

- A CRM/ICT team maintaining an IATI-compliant database.
  - We use MS CRM Dynamics 365 to generate XML files.
- Project managers creating and updating their projects' details and results.
- Financial administrators and controllers updating financial information.
- Planning, Monitoring, Evaluation, and Learning (PMEL) officer(s) ensuring data quality and publishing to the IATI registry.
- A data analyst experienced in Power BI.



# Plan International Netherlands

## What is needed to start with Power BI?

- For external viewers:
  - Only the public report link(s).
- For internal users and anyone who needs to download Excel files from visuals:
  - Pro licenses for each user, unless using a Premium environment.
  - Tip: non-profit discount is available for Pro.
- For the developer(s):
  - A Pro or Premium license and a Desktop software.
  - A powerful laptop with lots of RAM:
    - 16Gb might crash or spend hours processing changes, 32Gb+ is recommended.
  - Fast internet connection.
  - External monitor(s) to work on multiple screens at once.
  - Notepad++ free software to check and search XML code.





# Plan International Netherlands

## Challenge #1

You may be used to seeing rows and columns... but you won't see them here.

XML files need to be “unpacked” first.



File Website - Power Query Editor

Close & Apply Close New Source Recent Sources Enter Data Data source settings Data Sources Manage Parameters Refresh Preview Advanced Editor Properties Choose Columns Remove Columns Keep Rows Remove Rows Sort Split Column Group By Data Type: Table Use First Row as Headers Replace Values Transform Merge Queries Append Queries Text Analytics Vision Azure Machine Learning Combine All Insights

Queries [40]

Main tables [16]

- Base table
- Projects
- Recipient countries
- Themes
- Budgets
- Sectors
- Donors
- Results (last period only)
- Spending
- Actual start dates (projects)
- Planned start dates (projects)
- Actual end dates (projects)
- Planned end dates (projects)
- Results (last end dates)
- Summaries
- Parent donors

Supporting tables [17]

- ResultType
- Sector
- PolicyMarker
- TransactionType
- RelatedActivityType
- IndicatorVocabulary
- ActivityStatus
- CollaborationType
- FlowType
- OrganisationRole
- PolicyMarkerVocabulary
- PolicySignificance
- SectorVocabulary
- IndicatorMeasure
- ActivityDateType
- OrganisationType
- Plan regions

3 COLUMNS, 1 ROW Column profiling based on top 1000 rows

Query Settings

PROPERTIES

Name

Base table

All Properties

APPLIED STEPS

Source

- Expanded iati-activity first level
- Expanded Activity title
- Expanded Activity title even ...
- Changed Type
- Changed Type1
- Renamed Columns
- Replaced Value
- Replaced Value1
- Expanded iati-activity.activity...
- Filtered Rows

Query: = Xml.Tables(Web.Contents("https://iati.plannederland.nl/NL-KVK-41198890-IATI-activity-file.xml"))

Table: iati-activity

	Attribute:version	Attribute:generated-datetime
Valid	100%	100%
Error	0%	0%
Empty	0%	0%
	1 distinct, 1 unique	1 distinct, 1 unique
1 Table	2.02	2021-07-28T15:47:46.1761626+02:00

File Home Transform Add Column View Tools Help

Close & Apply New Source Recent Sources Enter Data Data source settings Manage Parameters Refresh Preview Advanced Editor Manage Query Choose Columns Remove Columns Keep Rows Remove Rows Sort Split Column Group By Data Type: Text Use First Row as Headers Merge Queries Append Queries Text Analytics Vision Combine Files Azure Machine Learning

Queries [40]

Table.ExpandTableColumn(Source, "iatl-activity", {"iatl-identifier", "reporting-org", "title", "description", "participating-org", "activity-status", "activity-date",

Query Settings

PROPERTIES

Name

Base table

APPLIED STEPS

Source

Expanded iatl-activity first level

Expanded Activity title

Expanded Activity title even ...

Changed Type

Changed Type1

Renamed Columns

Replaced Value

Replaced Value1

Expanded iatl-activity.activity-...

Filtered Rows

27 COLUMNS, 212 ROWS Column profiling based on top 1000 rows

PREVIEW DOWNLOADED ON ZONDAG

01:04

File

Home

Transform

Add Column

View

Tools

Help

Close & Apply

New Source

Recent Sources

Enter Data

Data source settings

Manage Parameters

Refresh Preview

Advanced Editor

Choose Columns

Remove Columns

Keep Rows

Remove Rows

Sort

Split Column

Group By

Data Type: Text

Use First Row as Headers

Replace Values

Transform

Merge Queries

Append Queries

Combine Files

Combine

Text Analytics

Vision

Azure Machine Learning

AI Insights

Queries [40]

Main tables [16]

Base table

Projects

Recipient countries

Themes

Budgets

Sectors

Donors

Results (last period only)

Spending

Actual start dates (projects)

Planned start dates (projects)

Actual end dates (projects)

Planned end dates (projects)

Results (last end dates)

Summaries

Parent donors

Supporting tables [17]

ResultType

Sector

Policy/Marker

TransactionType

RelatedActivityType

IndicatorVocabulary

ActivityStatus

CollaborationType

FlowType

OrganisationRole

Policy/MarkerVocabulary

PolicySignificance

SectorVocabulary

IndicatorMeasure

ActivityDateType

OrganisationType

Plan regions

Table.SelectColumns("#Removed Duplicates",{ "iati-activity.iati-identifier", "Sector", "Sector category-name" })

Valid

Error

Empty

100%

0%

0%

Valid

Error

Empty

98%

0%

2%

Valid

Error

Empty

98%

0%

2%

40 distinct, 29 unique

53 distinct, 53 unique

22 distinct, 10 unique

iati-activity.iati-identifier	Sector	Sector category-name
NL-KVK-41198890-She Leads		
NL-KVK-41198890-ETH102313	Relief co-ordination and support services	Emergency Response
NL-KVK-41198890-ETH102313	Education facilities and training	Education, Level Unspecified
NL-KVK-41198890-ETH102313	Primary education	Basic Education
NL-KVK-41198890-PAO100011	Human rights	Government & Civil Society-general
NL-KVK-41198890-PAO100011	Women's rights organisations and movements, and government inst...	Government & Civil Society-general
NL-KVK-41198890-UGA100450	Basic life skills for adults	Basic Education
NL-KVK-41198890-JOR100048	Early childhood education	Basic Education
NL-KVK-41198890-LBR100139	Ending violence against women and girls	Government & Civil Society-general
NL-KVK-41198890-LBN100019	Vocational training	Secondary Education
NL-KVK-41198890-ECU100271	Higher education	Post-Secondary Education
NL-KVK-41198890-SSD100108	Medical education/training	Health, General
NL-KVK-41198890-MU100929	Women's equality organisations and institutions	Government & Civil Society-general
NL-KVK-41198890-NGA100033	Basic health infrastructure	Basic Health
NL-KVK-41198890-NGA100033	Basic nutrition	Basic Health
NL-KVK-41198890-Wash First	Infectious disease control	Basic Health
NL-KVK-41198890-KEN100283	Health education	Basic Health
NL-KVK-41198890-JOR100048	Health personnel development	Basic Health
NL-KVK-41198890-SDN100338	Material relief assistance and services	Emergency Response
NL-KVK-41198890-SSD100224	Food assistance	Development Food Assistance
NL-KVK-41198890-UGA100315	Population policy and administrative management	Population Policies/Programmes & Reproductive Health
NL-KVK-41198890-NER100262	Reproductive health care	Population Policies/Programmes & Reproductive Health
NL-KVK-41198890-Break Free!	Support to local and regional NGOs	SUPPORT TO NON- GOVERNMENTAL ORGANISATIONS (NL...
NL-KVK-41198890-UGA100450	Water sector policy and administrative management	Water Supply & Sanitation
NL-KVK-41198890-UGA100450	Basic drinking water supply and basic sanitation	Water Supply & Sanitation
NL-KVK-41198890-Leaders of Peace	Civilian peace-building, conflict prevention and resolution	Conflict, Peace & Security
NL-KVK-41198890-Leaders of Peace	Democratic participation and civil society	Government & Civil Society-general
NL-KVK-41198890-UGA100278	Basic drinking water supply	Water Supply & Sanitation
NL-KVK-41198890-UGA100278	Basic sanitation	Water Supply & Sanitation
NL-KVK-41198890-UGA100315	Education and training in water supply and sanitation	Water Supply & Sanitation
NL-KVK-41198890-DOM ECHO Parent	Disaster prevention and preparedness	Disaster Prevention & Preparedness
NL-KVK-41198890-LBN100019	Small and medium-sized enterprises (SME) development	Industry

3 COLUMNS, 53 ROWS

Column profiling based on top 1000 rows

Query Settings

PROPERTIES

Name

Sectors

All Properties

APPLIED STEPS

Source

Expanded iati-activity.sector

Merged Queries1

Expanded Sector

Renamed Columns1

Removed Duplicates

Removed Other Columns

1

2

3



Power Query Editor interface showing the transformation of XML data into a table. The main window displays the 'Sector' table with columns: Sector.code, Sector, Sector.description, Sector.category, and Sector.category-name. The table is filtered to show 325 distinct rows. The 'Advanced Editor' window is open, showing the M code used to transform the XML data.

**Queries [40]**

- Main tables [16]
  - Base table
  - Projects
  - Recipient countries
  - Themes
  - Budgets
  - Sectors
  - Donors
  - Results (last period only)
  - Spending
  - Actual start dates (projects)
  - Planned start dates (projects)
  - Actual end dates (projects)
  - Results (last end dates)
  - Summaries
  - Parent donors
- Supporting tables [17]
  - ResultType
  - Sector**
  - Policy/Marker
  - TransactionType
  - RelatedActivityType
  - IndicatorVocabulary
  - ActivityStatus
  - CollaborationType
  - FlowType
  - OrganisationRole
  - Policy/MarkerVocabulary
  - PolicySignificance
  - SectorVocabulary
  - IndicatorMeasure
  - ActivityDateType
  - OrganisationType
  - Plan regions

**Table: RenameColumns**

Sector.code	Sector	Sector.description	Sector.category	Sector.category-name
11110	Education policy and administrative management	Education sector policy, planning and programmes; aid to education m...	111	Education, Level Unspecified
11120	Education facilities and training	Educational buildings, equipment, materials; subsidiary services to ed...	111	Education, Level Unspecified
11130	Teacher training	Teacher education (where the level of education is unspecified); in-ser...	111	Education, Level Unspecified
11182	Educational research	Research and studies on education effectiveness, relevance and qualit...	111	Education, Level Unspecified
11220	Primary education	Formal and non-formal primary education for children; all elementary ...	112	Basic Education
11230	Basic life skills for adults	Formal and non-formal education for basic life skills for adults (adults ...	112	Basic Education

**Advanced Editor**

```
let
    Source = Xml.Tables(Web.Contents("http://iatistandard.org/203/codelists/downloads/clv1/codelist/Sector.xml")),
    #"Changed Type" = Table.TransformColumnTypes(Source,{{"Attribute:date-last-modified", type datetime}, {"Attribute:version", type text}, {"Attribute:name", type text}}),
    #"Expanded Sector" = Table.ExpandTableColumn(#"Changed Type", "Sector", {"code", "name", "language", "description", "category", "category-name", "Sector.category-name", "Sector.description", "Sector.name", "Sector.language", "Sector.description", "Sector.category", "Sector.category-name"}, {"Sector.category-description"}),
    #"Removed Columns" = Table.RemoveColumns(#"Expanded Sector", {"http://www.w3.org/XML/1998/namespace", "Attribute:name", "Attribute:version", "Attribute:date-last-modified", "Sector.language"}),
    #"Renamed Columns" = Table.RenameColumns(#"Removed Columns",{{"Sector.name", "Sector"}, {"Sector.description", "Sector description"}, {"Sector.category", "Sector.category"}, {"Sector.category-name", "Sector category-name"}, {"Sector.category-description", "Sector category-description"}}),
    in
        #"Renamed Columns"
```

✓ No syntax errors have been detected.

Done Cancel

Query Settings

**PROPERTIES**

Name: Sector

All Properties

**APPLIED STEPS**

- Source
- Changed Type
- Expanded Sector
- Removed Columns
- Renamed Columns**

6 COLUMNS, 325 ROWS Column profiling based on top 1000 rows

PREVIEW DOWNLOADED ON ZONDAG

File

Home

Transform

Add Column

View

Tools

Help

Close & Apply

New Source

Recent Sources

Enter Data

Data source settings

Manage Parameters

Refresh Preview

Advanced Editor

Choose Columns

Remove Columns

Keep Rows

Remove Rows

Sort

Split Column

Group By

Data Type: Text

Use First Row as Headers

Replace Values

Transform

Merge Queries

Append Queries

Combine Files

Combine

Text Analytics

Vision

Azure Machine Learning

All Insights

Queries [43]

Main tables [11]

Base table

Plan Activities

Plan Budget

Plan Related Activities

Plan Transactions

Plan Results

Plan Sectors

Plan Activity Names only

Transactions and Budgets

Transaction Pivot

Plan Recipient Countries (new source)

Partners [8]

Rutgers

CFYAS

KIT

AMREF NL

AMREF Ethiopia

AMREF Kenya

AMREF Malawi

Plan

Supporting tables [16]

ResultType

Sector

PolicyMarker

TransactionType

RelatedActivityType

IndicatorVocabulary

ActivityStatus

CollaborationType

FlowType

OrganisationRole

PolicyMarkerVocabulary

PolicySignificance

SectorVocabulary

Table.Combine({#"Changed Type1", #"AMREF NL", Rutgers, KIT, CFYAS, #"AMREF Ethiopia", #"AMREF Kenya", #"AMREF Malawi"})

Table

Column

Value

Valid

Invalid

Empty

8 distinct, 4 unique

100%

0%

90%

Table

Column

Value

Valid

Invalid

Empty

13 distinct, 10 unique

100%

0%

0%

Table

Column

Value

Valid

Invalid

Empty

< 1%

0%

99%

Table

Column

Value

Valid

Invalid

Empty

11%

0%

89%

Query Settings

PROPERTIES

Name

Base table

All Properties

APPLIED STEPS

Source

Expanded iati-activity first level

Expanded Activity title

Expanded Activity title even ...

Removed unused tablefields

Changed Type

Changed Type1

Appended Query

Filtered Rows

21 COLUMNS, 239 ROWS

Column profiling based on top 1000 rows

PREVIEW DOWNLOADED ON ZONDRAG

International Aid Transparency Initiative

Virtual Community Exchange 2

#iatiVCE2

12 and 13 October 2021

# Plan International Netherlands

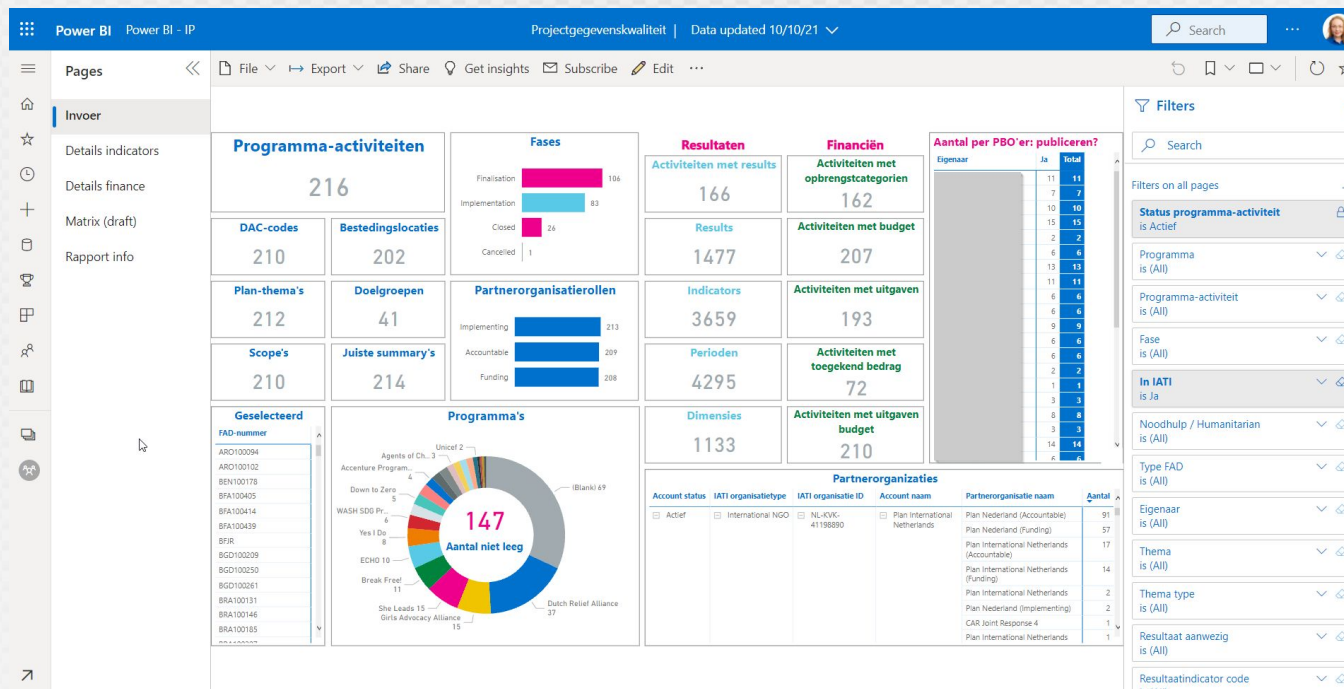
## Challenge #2

How can I make sure that the data published in IATI is correct?



# Plan International Netherlands

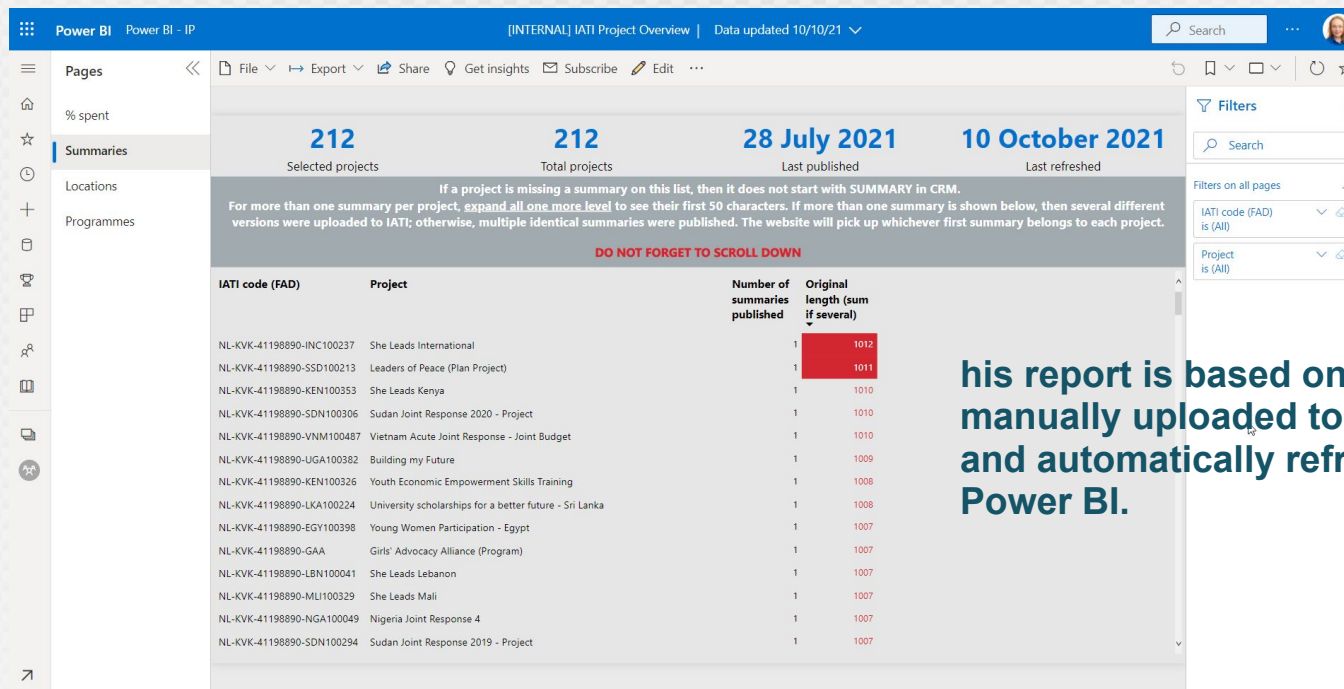
Step 1: check the data in CRM before it is added to the XML file.





# Plan International Netherlands

## Step 2: check the data in the XML file before publishing.



**Power BI** Power BI - IP [INTERNAL] IATI Project Overview | Data updated 10/10/21

212 Selected projects 212 Total projects 28 July 2021 Last published 10 October 2021 Last refreshed

If a project is missing a summary on this list, then it does not start with SUMMARY in CRM.  
For more than one summary per project, expand all one more level to see their first 50 characters. If more than one summary is shown below, then several different versions were uploaded to IATI; otherwise, multiple identical summaries were published. The website will pick up whichever first summary belongs to each project.

**DO NOT FORGET TO SCROLL DOWN**

IATI code (FAD)	Project	Number of summaries published	Original length (sum if several)
NL-KVK-41198890-INC100237	She Leads International	1	1012
NL-KVK-41198890-SSD100213	Leaders of Peace (Plan Project)	1	1011
NL-KVK-41198890-KEN100353	She Leads Kenya	1	1010
NL-KVK-41198890-SDN100306	Sudan Joint Response 2020 - Project	1	1010
NL-KVK-41198890-VNM100487	Vietnam Acute Joint Response - Joint Budget	1	1010
NL-KVK-41198890-UGA100382	Building my Future	1	1009
NL-KVK-41198890-KEN100326	Youth Economic Empowerment Skills Training	1	1008
NL-KVK-41198890-LKA100224	University scholarships for a better future - Sri Lanka	1	1008
NL-KVK-41198890-EGY100398	Young Women Participation - Egypt	1	1007
NL-KVK-41198890-GAA	Girls' Advocacy Alliance (Program)	1	1007
NL-KVK-41198890-LBN100041	She Leads Lebanon	1	1007
NL-KVK-41198890-MLI100329	She Leads Mali	1	1007
NL-KVK-41198890-NGA100049	Nigeria Joint Response 4	1	1007
NL-KVK-41198890-SDN100294	Sudan Joint Response 2019 - Project	1	1007

**Filters**

Filters on all pages

IATI code (FAD) is (All)

Project is (All)

**T**his report is based on an XML file manually uploaded to SharePoint and automatically refreshed by Power BI.

# Plan International Netherlands

## What other challenges have we faced?

- Training colleagues and external parties in using Power BI.
- Depending on an external CRM supplier for continued IATI compliance and system updates.

## What questions have come up?

- Which part of the published data to show?
- If public: mobile friendly, embedded, advertised?
- Who's the target audience?



# Plan International Netherlands

## How has Power BI helped us with IATI?

- **Skilled staff**
  - 60+ colleagues received training in project data reports.
- **Faster results**
  - Checking, analyzing, and reporting takes far less time.
- **Cost reduction**
  - Automated reports allow us to spend less time on repetitive tasks
- **Higher quality data**
  - Two-step check allows us to identify issues faster and fix them before publishing.

Does improvement ever end? Of course, not!









The central graphic features a network diagram with a central octagon. Inside the octagon, the 'Data4Development' logo is displayed, consisting of a stylized 'd4d' in green and blue, followed by the text 'Data4Development' in grey. Below this, the words 'DUTCH RELIEF ALLIANCE' are written, with 'DUTCH' in orange and 'RELIEF ALLIANCE' in black. The octagon is surrounded by a network of nodes (colored circles with concentric rings) and connecting lines. The background includes large grey concentric arcs and a complex network of nodes and lines in the top right and bottom left corners.

**d4d**  
Data4Development

**DUTCH**  
**RELIEF  
ALLIANCE**



# Dutch Relief Alliance

## IATI!

- Exchange forward-looking and timely information
- Make coordination across organisations easier

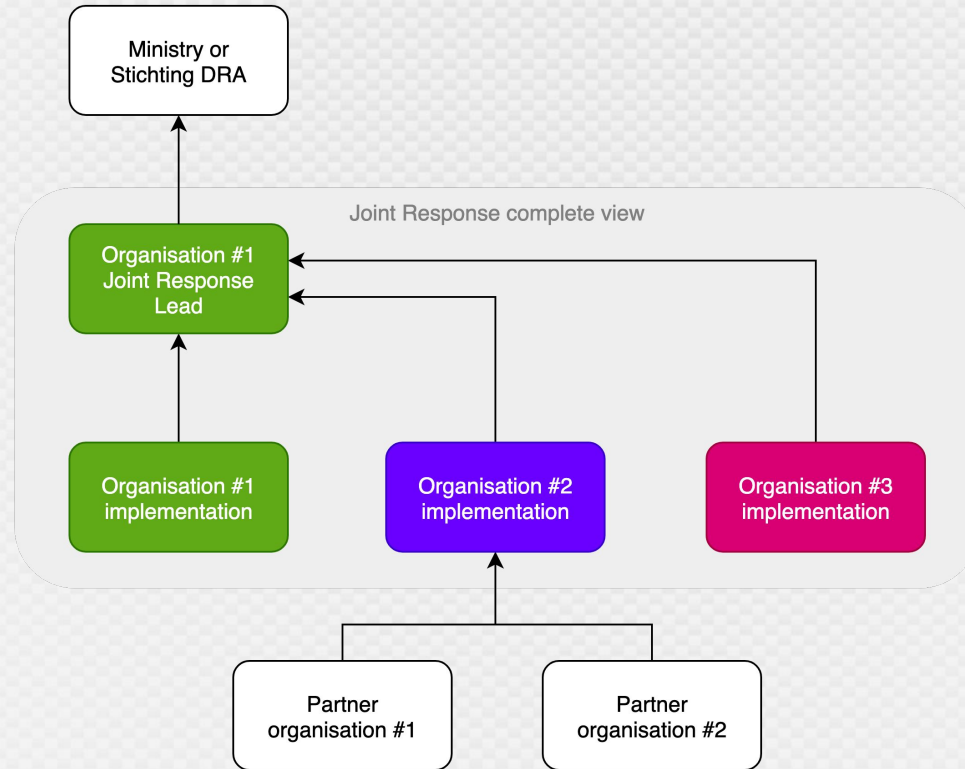
## It is already underway:

- Dutch Ministry of Foreign Affairs is collecting IATI data
- Organisations have processes to publish IATI data

## How to benefit from this?



# The anatomy of a Joint Response





## Organisation

- ☐ CARE Nederland
- ☐ Cordaid
- ☐ Dorcas Aid International
- ☐ Foundation ICCO
- ☐ Oxfam Novib
- ☐ Plan International Neth...
- ☐ Save the Children Neth...
- ☐ SOS Children's Villages ...
- ☐ Stichting Vluchteling
- ☐ Tearfund Nederland
- ☐ Terre des Hommes Net...
- ☐ War Child Holland
- ☐ World Vision Netherlan...
- ☐ ZOA

## Year

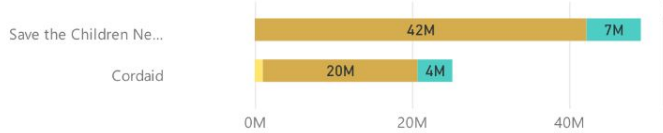
- ☐ 2021
- ☐ 2020
- ☐ 2019
- ☐ 2018
- ☐ 2017

Last data refresh

6/15/2021

## Joint Response lead budget

● expenditure ● disbursement ● remaining

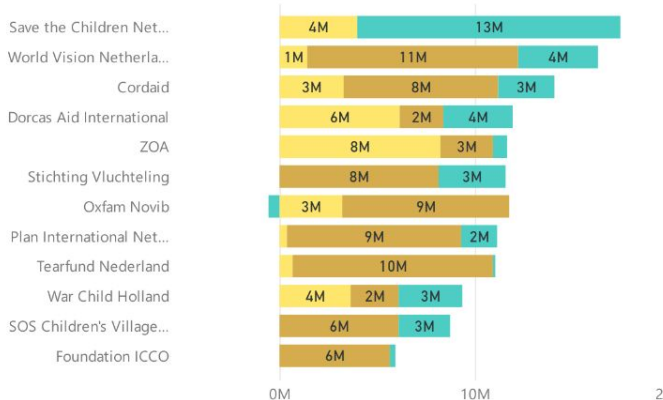


## Key dates

01/01/2017	31/12/2021
Earliest planned-start	Latest planned-end
01/01/2017	31/12/2021
Earliest actual-start	Latest actual-end

## Implementation budget by Organisation

● expenditure ● disbursement ● remaining

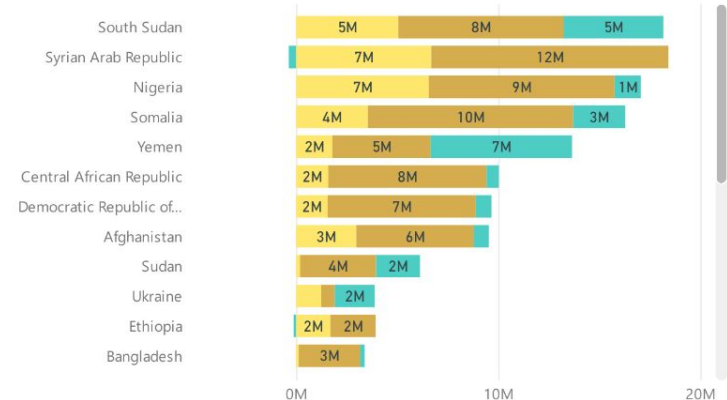


## Budget by Country



## Implementation by Geography

● expenditure ● disbursement ● remaining



Organisation

- ☐ CARE Nederland
- ☐ Cordaid
- ☐ Oxfam Novib
- ☐ Save the Children Neth...
- ☐ Stichting Vluchteling
- ☐ ZOA

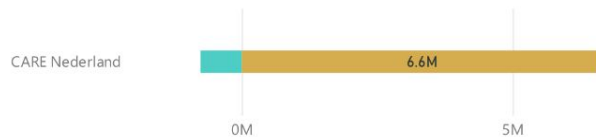
Year

- ☐ 2021
- ☐ 2020

Last data refresh  
6/15/2021

Joint Response lead budget

● expenditure ● disbursement ● remaining

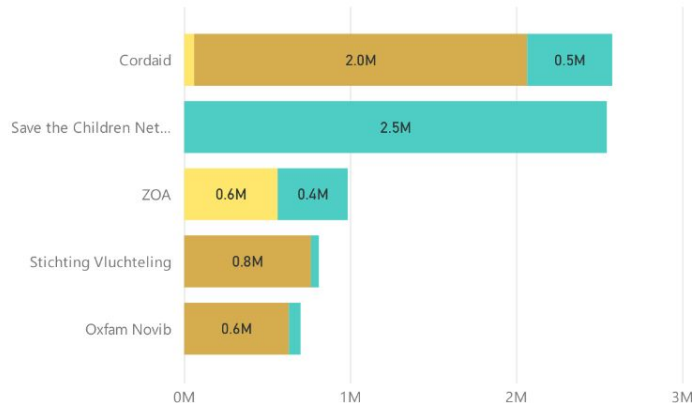


Key dates

01/01/2020	31/12/2021
Earliest planned-start	Latest planned-end
01/01/2020	31/12/2020
Earliest actual-start	Latest actual-end

Implementation budget by Organisation

● expenditure ● disbursement ● remaining

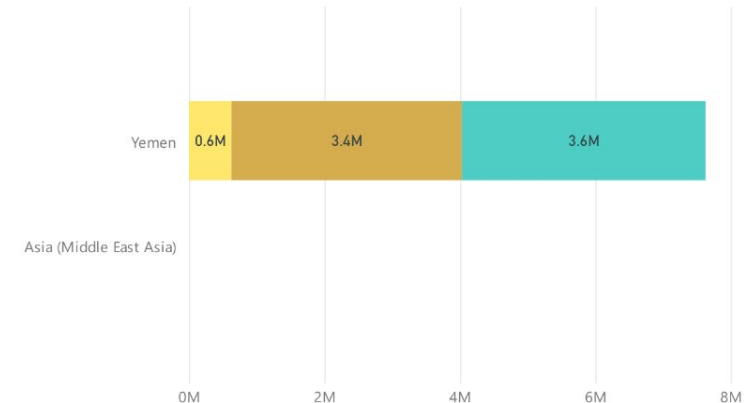


Budget by Country



Implementation by Geography

● expenditure ● disbursement ● remaining



Organisation

- ☐ CARE Nederland
- ☐ Cordaid
- ☐ Oxfam Novib
- ☐ Save the Children Neth...
- ☐ Stichting Vluchteling
- ☐ ZOA

Year

- ☐ 2021
- ☐ 2020

Joint Response

YEM 5

Joint Response Lead

organisation	title	activity-identifier	budget	incoming-commitment	outgoing-commitment	incoming-funds	expenditure	disbursement	remaining
CARE Nederland	Yemen Joint Response 2020 (c...	NL-KVK-41158230-YEM028N	5,886,662	6,886,662	6,707,400	6,886,662	0	6,647,500	-760,838
<b>Total</b>			<b>5,886,662</b>	<b>6,886,662</b>	<b>6,707,400</b>	<b>6,886,662</b>	<b>0</b>	<b>6,647,500</b>	<b>-760,838</b>

Implementation activities

organisation	title	activity-identifier	budget	incoming-commitment	outgoing-commitment	incoming-funds	expenditure	disbursement	remaining
Cordaid	Yemen Joint Response 2020-2...	NL-KVK-41160054-200680	2,578,656	2,578,657	2,218,504	1,408,402	62,213	2,004,563	511,880
Save the Children Neth...	Yemen Joint Response 2020	NL-KVK-41201463-PYENO-006	2,547,230	1,081,477	1,001,368	1,465,753	0	0	2,547,230
ZOA	Yemen Joint Response 2020	NL-KVK-41009723-YEM1913	987,481	987,481	0	987,481	565,028	0	422,453
Stichting Vluchteling	Yemen Joint Response 6: Provi...	NL-KVK-41149486-YEM-20.1-...	812,521	812,521	804,998	812,521	0	764,748	47,773
Oxfam Novib	OGB Yemen Joint Response 5	NL-KVK-27108436-A-06118-0...	702,334	0	0	632,100	0	632,100	70,234
<b>Total</b>			<b>7,628,222</b>	<b>5,460,136</b>	<b>4,024,870</b>	<b>5,306,257</b>	<b>627,241</b>	<b>3,401,411</b>	<b>3,599,570</b>

Organisation

- ☐ CARE Nederland
- ☐ Cordaid
- ☐ Oxfam Novib
- ☐ Save the Children Net...
- ☐ Stichting Vluchteling
- ☐ ZOA

Result subtheme

- ☐ Accountability
- ☐ COVID-19
- ☐ Health
- ☐ Localization
- ☐ Multi-purpose Cash
- ☐ WASH

Joint Response

YEM 5



Disaggregated results per organisation

Sex + Age disaggregations subtheme	actual		Boys		Girls		Men		Women		Total	
	actual	target	actual	target	actual	target	actual	target	actual	target	actual	target
<b>Accountability</b>												
ACC-I1: Number of crisis-affected people who are also involved in the design, implementation, monitoring and/or evaluation of the programme	28,061	7,761									28,061	7,761
<b>COVID-19</b>												
FSL-COV-I3: Number of people receiving COVID-19 related assistance (FS&L).		2,548										2,548
HEA-COV-I9: Number of people receiving COVID-19 related assistance (Health).	5,190	9,928									5,190	9,928
WSH-COV-I7: Number of people receiving COVID-19 related assistance (WASH).	56,982	50,000									56,982	50,000
<b>Health</b>												
HEA-I1: Number of health facilities rehabilitated	10	14									10	14
HEA-I2: Number of mental health consultations	0		48	0	78	0	194	233	782	193	1,102	426
HEA-I3: Number of live births attended by skilled health personnel	100	50							1,012	557	1,112	607
HEA-I5: Number of primary health care consultations			5,196	9,408	4,829	4,704	4,893	5,664	8,792	6,288	23,710	26,064
HEA-I6: Number of hospitalisations	1,650	1,650							825	557	2,475	2,207
<b>Localization</b>												
LOC-I1: % of budget that went to national and local actors	95	26									95	26
LOC-I2: % of budget spent on capacity building of national and local actors	1	6									1	6
LOC-I3: Number of national and local actors supported with capacity-building	1	16									1	16
<b>Multi-purpose Cash</b>												
CSH-I1: Number of people benefitting from unconditional and unrestricted cash transfers	8,162	14,945									8,162	14,945

Result details and comments for actuals and targets

organisation	indicator	period-start	period-end	actual	target	age	sex	comments	IATI
CARE Nederland	CSH-I1	1/1/2020	3/31/2021		2,940				30/0
CARE Nederland	CSH-I1	1/1/2020	3/31/2021	4,434				Actual: F<18: 1376, M<18: 1336, F>18: 909, M>18: 813	30/0
CARE Nederland	FSL-COV-I3	1/1/2020	3/31/2021		2,548				30/0
CARE Nederland	HEA-COV-I9	1/1/2020	3/31/2021		4,964				30/0
CARE Nederland	HEA-I1	1/1/2020	3/31/2021	1	1				30/0
CARE Nederland	HEA-I3	1/1/2020	3/31/2021	100	50				30/0
CARE Nederland	WSH-COV-I7	1/1/2020	3/31/2021		50,000				30/0
CARE Nederland	WSH-COV-I7	1/1/2020	3/31/2021	56,982				Actual: F<18: 12068, M<18: 11353, F>18: 18840, M>18: 14721	30/0
CARE Nederland	WSH-I1	1/1/2020	3/31/2021		5,993				30/0
CARE Nederland	WSH-I1	1/1/2020	3/31/2021	5,993				Actual: F<18: 1656, M<18: 1746, F>18: 1248, M>18: 1343	30/0
CARE Nederland	WSH-I2	1/1/2020	3/31/2021		299				30/0



Organisation

- ☐ CARE Nederland
- ☐ Cordaid
- ☐ Oxfam Novib
- ☐ Save the Children Net...
- ☐ Stichting Vluchteling
- ☐ ZOA

Result subtheme

- ☐ Accountability
- ☐ COVID-19
- ☒ Health
- ☐ Localization
- ☐ Multi-purpose Cash
- ☐ WASH

Joint Response

YEM 5



Disaggregated results per organisation

Sex + Age disaggregations subtheme	Boys		Girls		Men		Women		Total	
	actual	target	actual	target	actual	target	actual	target	actual	target
<b>Health</b>										
<b>HEA-I1: Number of health facilities rehabilitated</b>										
CARE Nederland	1	1							1	1
Cordaid	9	13							9	13
<b>HEA-I2: Number of mental health consultations</b>										
Cordaid	0								0	
Stichting Vluchteling			48	0	78	0	194	233	782	193
									1,102	426
<b>HEA-I3: Number of live births attended by skilled health personnel</b>										
CARE Nederland	100	50							100	50
Stichting Vluchteling								1,012	557	1,012
									557	557
<b>HEA-I5: Number of primary health care consultations</b>										
Stichting Vluchteling			5,196	9,408	4,829	4,704	4,893	5,664	8,792	6,288
									23,710	26,064
<b>HEA-I6: Number of hospitalisations</b>										
Cordaid	1,650	1,650							1,650	1,650
Stichting Vluchteling									825	557
									825	557

Result details and comments for actuals and targets

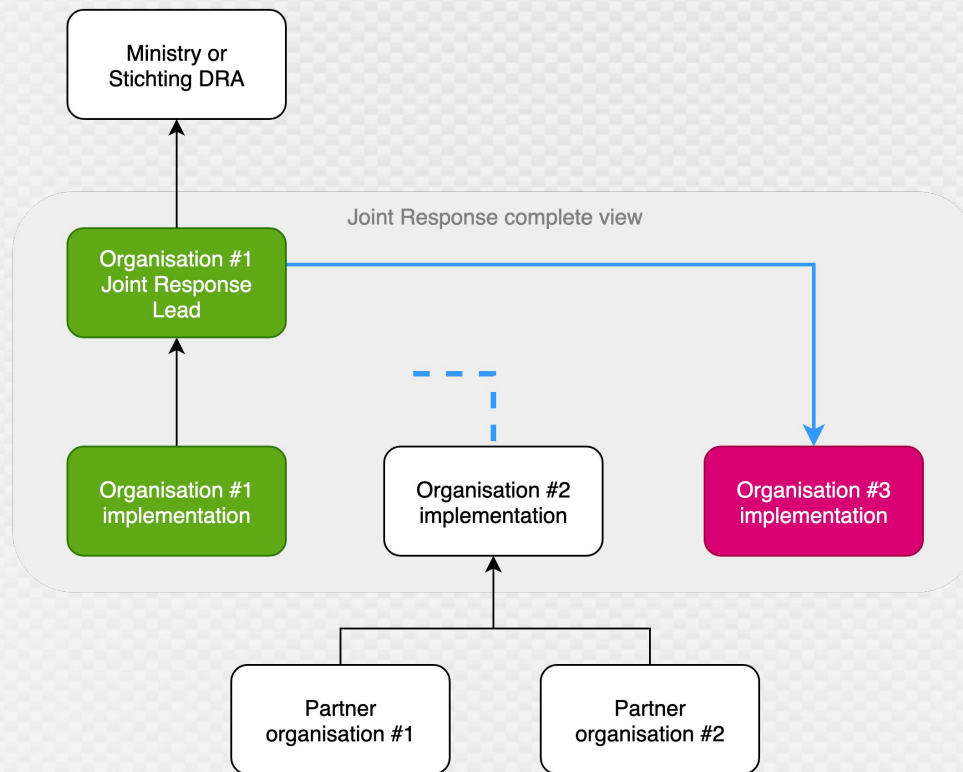
organisation	indicator	period-start	period-end	actual	target	age	sex	comments	IATI up
CARE Nederland	HEA-I1	1/1/2020	3/31/2021	1	1				30/04/
CARE Nederland	HEA-I3	1/1/2020	3/31/2021	100	50				30/04/
Cordaid	HEA-I1	10/1/2019	12/31/2019	0					03/06/
Cordaid	HEA-I2	10/1/2019	12/31/2019	0					03/06/
Cordaid	HEA-I6	10/1/2019	12/31/2019	0					03/06/
Cordaid	HEA-I1	7/1/2020	9/30/2020	0					03/06/
Cordaid	HEA-I6	7/1/2020	9/30/2020	1,650					03/06/
Cordaid	HEA-I1	10/1/2020	12/31/2020	9					03/06/
Cordaid	HEA-I6	10/1/2020	12/31/2020	0					03/06/
Cordaid	HEA-I1	1/1/2021	3/31/2021	0					03/06/
Cordaid	HEA-I2	1/1/2021	3/31/2021	0					03/06/

# Some challenges we faced

- At the start, it is all about data quality.
- IATI provides a base standard, but you still need to standardise more:
  - Ways to link to each other
  - Financial information to include
  - Result indicators to share
  - Indicator dimensions to use
  - ...
- The IT system of an organisation may not be adaptable to what you want.



# Missing links



Overview of activity identifiers found in the IATI data by tracing downstream activities.

feedback

action by whom?

WARNING

All

iati-identifier	organisation	JR	feedback	what it means	action needed?	by whom	upstream iati-identifier	upstream organisation	linking to upstream?	upstream linking to this?
NL-KVK-27108436-A-06119-02:SY	Oxfam Novib	SYR 2020	WARNING	The upstream activity points downward to this activity	Oxfam Novib should include a reference to the upstream activity (or ZOA must fix the downward reference)	Oxfam Novib	NL-KVK-41009723-SJR2020	ZOA	N	Y
NL-KVK-41149486-AFG-18.2-DRA	Stichting Vluchteling	AFG 3	WARNING	The upstream activity points downward to this activity	Stichting Vluchteling should include a reference to the upstream activity (or Cordaid must fix the downward reference)	Stichting Vluchteling	NL-KVK-41160054-200308	Cordaid	N	Y
NL-KVK-41149486-CAR-18.1-DRA	Stichting Vluchteling	CAR 4	WARNING	The upstream activity points downward to this activity	Stichting Vluchteling should include a reference to the upstream activity (or Cordaid must fix the downward reference)	Stichting Vluchteling	NL-KVK-41160054-200311	Cordaid	N	Y
NL-KVK-41177385-2018015-DRCJR1	Tearfund Nederland	DRC 1	WARNING	The upstream activity points downward to this activity	Tearfund Nederland should include a reference to the upstream activity (or World Vision Netherlands must fix the downward reference)	Tearfund Nederland	NL-KVK-41179943-210194	World Vision Netherlands	N	Y
NL-KVK-41179943-211664	World Vision Netherlands	SOM 1	WARNING	The upstream activity points downward to this activity	World Vision Netherlands should include a reference to the upstream activity (or World Vision Netherlands must fix the downward reference)	World Vision Netherlands	NL-KVK-41179943-NL-KVK-41179943-211664	World Vision Netherlands	N	Y
NL-KVK-41179943-NLDOCORD0008	World Vision Netherlands	CAR 4	WARNING	The upstream activity points downward to this activity	World Vision Netherlands should include a reference to the upstream activity (or Cordaid must fix the downward reference)	World Vision Netherlands	NL-KVK-41160054-200311	Cordaid	N	Y
NL-KVK-41201463-PYENO004	Save the Children Netherlands	YEM 4	WARNING	The upstream activity points downward to this activity	Save the Children Netherlands should include a reference to the upstream activity (or CARE Nederland must fix the downward reference)	Save the Children Netherlands	NL-KVK-41158230-YEM022N	CARE Nederland	N	Y
NL-KVK-41215393-SS4004	War Child Holland	SSD 5	WARNING	The upstream activity points downward to this activity	War Child Holland should include a reference to the upstream activity (or War Child Holland must fix the downward reference)	War Child Holland	NL-KVK-41215393-SS4007	War Child Holland	N	Y
NL-KVK-41236410-6569	Dorcas Aid International	LBN 1	WARNING	The upstream activity points downward to this activity	Dorcas Aid International should include a reference to the upstream activity (or Dorcas Aid International must fix the downward reference)	Dorcas Aid International	NL-KVK-41236410-BeirutJRLead	Dorcas Aid International	N	Y



# Translate dimension names and values

1	published dimension name	published dimension value	show as dimension name	show as dimension value
2	age	18+	Age	18+
3	age	under 18	Age	Under 18
4	age	above 18	Age	18+
5	age	over 18	Age	18+
6	Age [-18/18+]	Age -18	Age	Under 18
7	Age [-18/18+]	Age 18 or above	Age	18+
8	gender	female	Sex	Female
9	gender	male	Sex	Male
10	Gender - genre	Female - feminin	Sex	Female



# Dutch Relief Alliance: lessons learned



- It's all about data quality.
- IATI is just one component:
  - What is the story you try to tell?
  - How is that represented in IATI data?
  - How are organisational processes around the data organised?
  - How will it be used and promoted?
- It is not a project, it is more like a garden: you need to keep working on it.





# Final Interactive Part & Closing

1. Put your **Power BI-portal in the spotlight**: do you have another example of an inspiring Power-BI dashboard? **Share in the chat box!**
2. Any **final questions** you would like to share with the speakers/audience?

Raise your virtual hand  or drop your final comment in the chat box 

- We will **follow-up on your comments** during the session and through the chat; any further questions or suggestions? - Please contact [sander.hees@undp.org](mailto:sander.hees@undp.org)
- For a recap of the VCE2, or any follow-up questions based on the session: create your profile on **IATI Connect** (<https://iaticonnect.org/>) and join one of our **Communities**.